

# Hydraulic spreaders



<b>Spreader</b>		↓
model	ISU 20	
art no	170.102.005	
working pressure bars/Mpa	500 / 50	
spreading opening mm	557	
spreading force kN/t	41.2 / 4.2	
squeezing force kN/t	28.7 / 2.9	
weight kg	30.5	
dimensions (lxwxh) mm	852x358x359	
temperature reach °C	-20 +80	
oil content cm <sup>3</sup>	144	

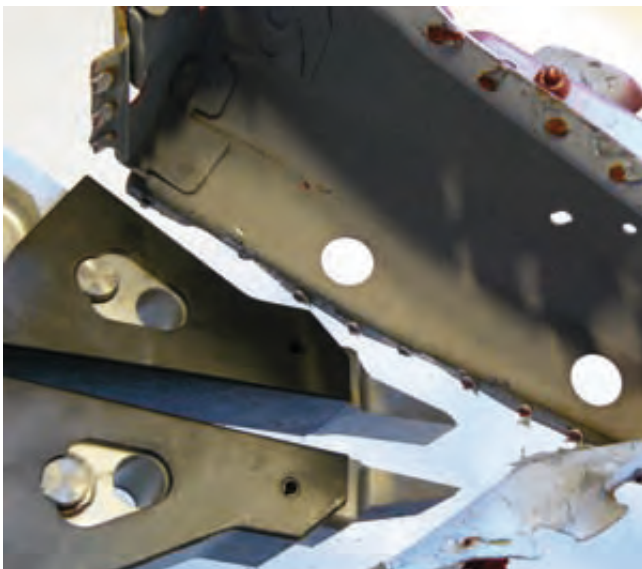
**Specifications / important properties** ↓

- for destructive testing of the welding points of bodyworks or body parts
- standard delivered with spreading tip 30 - 0 mm plug-in (2 pieces)
- quick for an efficient (production) process
- ergonomic
  - equipped with user-friendly rotating mechanism
- safe
  - dead man's function
  - two-hand operation

**Available on request** ↓

- spreading tip 30 - 4 mm plug-in (2 pieces required), art no 170.000.003

Pumps	pag. 179
Hoses	pag. 180
Transport systems	pag. 180



ISU 20

<b>Pump</b>		↓
model	IPU-S 09 S 25 E	
art no	170.152.032	
motor	electric, 1.1 kW - 400 V - 50 Hz - 3 Ph	
working pressure bars/Mpa	500 / 50	
output < 500 bars l/min	0.9	
effective oil content l	25	
weight kg	72	
dimensions (lxwxh) mm	500x380x770	

**Specifications / important properties** ↓

- 2-stage pump for higher operating speed
- durable, low maintenance
- safe
  - protected against pressure drop by non-return valve in return port (prevents rebound when spreading)
  - in case of power failure, the system will become pressureless

**Available on request** ↓

- larger tank
- other voltages / frequencies



IPU-S 09 S 25 E



**Hoses**



model	IVL 5 SOU-EK	IVL 10 SOU-EK	IVL 20 SOU-EK
art no	170.570.001	170.570.002	170.570.014
length	m 5	10	20

**Transport systems**



description	max. carrying capacity	art no
crane for suspension of a spreader dimensions: <ul style="list-style-type: none"> <li>• bottom plate: 1000 x 1000 mm</li> <li>• total length: 3190 mm</li> <li>• height of suspension point: 2700 mm</li> <li>• arm length: 2000 mm</li> </ul>	50 kg	130.182.199
balancer for spreader	30-35 kg	130.581.001

**Specifications / important properties**



- hoses:
  - 4:1 safety ratio
  - anti-kink springs on both sides
  - complete with couplers
  - standard with protection sleeves for hoses and couplers
  - with 12V cable for electrical push-button operation of cutter
- crane:
  - provides a suspension point for your spreader where and when required. You are not dependent on existing suspension points or systems
  - with adjusting feet, can always be levelled
- balancer:
  - for virtually weightless operation of the spreader

**Available on request**



- hoses:
  - different lengths
  - other colour



IVL 10 SOU-EK



Spreader fastened to crane by means of balancer